

„Discover Samshvilde“



Samshvilde Archaeological Complex - one of the most impressive and important medieval city is located in Tetrickaro municipality, 67 km to south from Tbilisi. The complex occupies natural promontory rising at the confluence of two rivers and is characterized with unique landscape, various flora and fauna, and medieval period buildings.



- *Common view of Samshvilde archaeological complex*

Among the different historical bindings of the site, Samshvilde Sioni - the Cathedral of 8th century is most important. The inscription on its eastern facade tells about the building period and the architects of the temple.

The Citadel of Samshvilde is also unique fortification system, defending the Royal part of the city. Despite of several renovations during the long historical period, it preserves the original size and location.

The archaeological districts excavated in 2012-2016 by Samshvilde Archaeological Expedition of the University of Georgia are notable as well. The recent excavations prove that the territory where the medieval site is located was populated as far back as the Neolithic period.

At the same time Samshvilde Archaeological Expedition is open for every interested persons or groups of people who are interested in archaeology and gives an opportunity to participate in dig of this unique site.



- *Archaeological Excavations in Samshvilde. 2016.*

ArchaeoTour in Samshvilde



Visiting Samshvilde archaeological complex is possible in every season of the year, but the best period to do this is an autumn, winter or spring. The archaeological tour in Samshvilde foresees one day and includes:



9:00. Departure from Tbilisi to Samshvilde. Short brake (tea, coffee) on the Archaeological base of the University of Georgia.



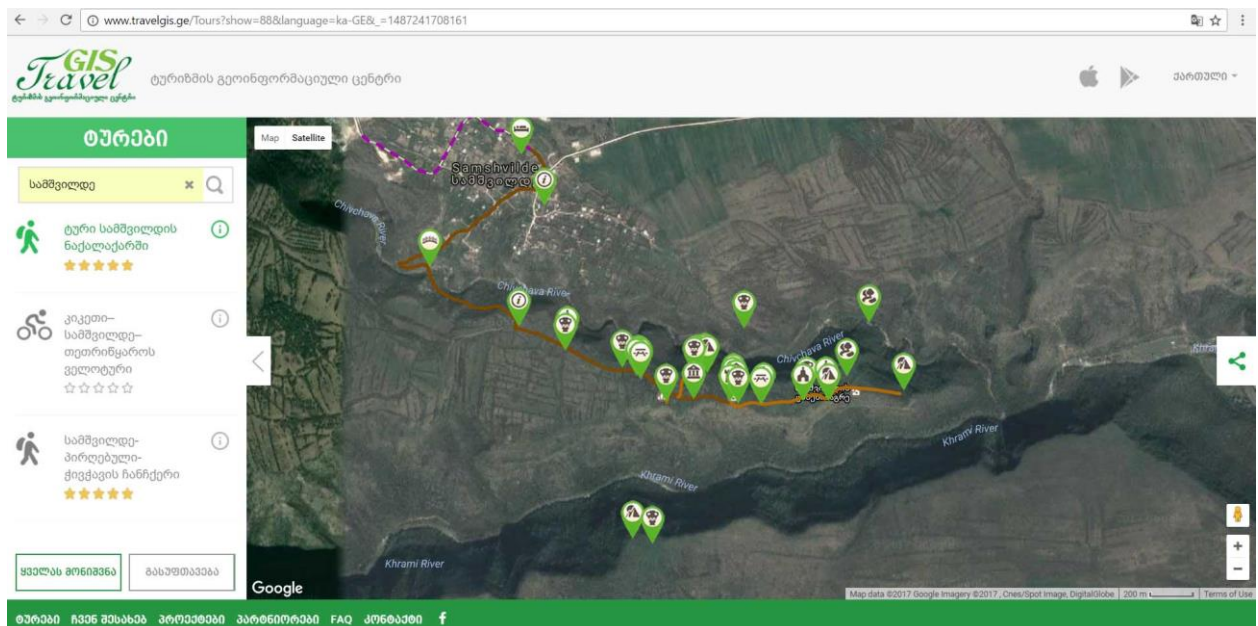
11:00. Walking in the medieval city of Samshvilde. Visiting all main sites of the site (Sioni Cathedral, Citadel, Megaliths „Palace” complex), archaeological districts and the beautiful sceneries of the nature.



17:00. Dinner on the Archaeological base of the University of Georgia.



19:30. Back to Tbilisi



The review of Samshvilde mobile application is easy on: www.travelgis.ge

*International Archaeological Center
The University of Georgia*



An official site of Samshvilde Archaeological Expedition: www.samshvilde.ge

Contact person: David Berikashvili

e-mail: d.berikashvili@yahoo.com

(+995 99) 31 99 15